

Plaster

3968
50% Cellulose, 40% Latex, 10% Polyester
Wallcovering




Product specification

Name	Plaster
Number	3968
Product Category	Wallcovering
Material Type	Coated
Content	50% Cellulose, 40% Latex, 10% Polyester
Finish	None
Backing	None
Width	50 inches (127 cm)
Weight	18.00 ounces/linear yard (558 grams/linear meter)
Average Bolt Size	20 yards
Installation Method	Straight Hang, Straight Across Match
Origin	United States
Warranty	5 years
Introduction Date	01/10/2025
Optional Added Finish (Upcharge Applies)	UV2 Guardian Topcoat

Design

Pattern Type	Organic, Texture
Pattern Scale	Medium
Repeat	V 62.00 inches x H 50.00 inches (V 157.48 cm x H 127.00 cm)

Performance

Flammability	ASTM E 84 Adhered Class A
Lightfastness	200 hours
Performance Standards	  
Wallcovering Classification	Type II Characteristics
Cleaning Code	Water-based (W)
Approved Disinfectants	Oxivir® 1 Oxivir® 1 Wipes Oxivir® Tb Oxivir® Tb Wipes Virex® II 256

Sustainability

Certifications & Programs	ASTM D6866 Biobased Content, Healthier Hospitals, HPD, LEED, Mindful Materials, No Prop 65 warning required, SCS Indoor Advantage Gold, WELL
Material Health	Low VOC, No Antimicrobials, No Flame Retardants, No PFAS, No PVC



Snow
3968-051



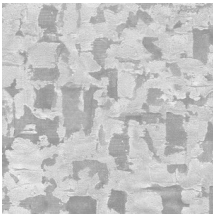
Linen
3968-052



Flax
3968-101



Driftwood
3968-102



Fog
3968-151



Bark
3968-152



Sable
3968-251



Copper
3968-301



Storm
3968-751