

PALADIN

Collection Corium

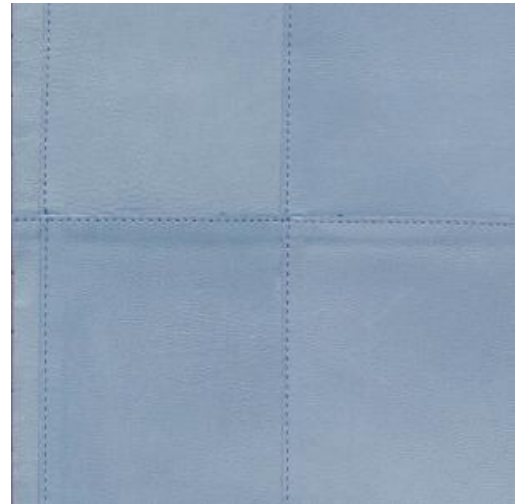


Story behind the collection

The Corium collection offers a contemporary interpretation of classical patterns from the Early Renaissance. Authentic historical motifs are subtly interwoven throughout the collection. Crafted from premium caprine leather, supple yet strong with a luxurious finish, the collection takes its name from the Latin word corium, underlining the very essence of leather.

Technical specifications

Reference	<u>27454</u> • Lilac
Product category	Couture
Composition	Natural wallcovering on non-woven backing
Description	A plain featuring satin-finished leather cut and stitched by hand into a clean, linear pattern
Dimensions	Width 100 cm (39.37") / sold by the linear metre/yard
Pattern repeat	Free match 0 cm (0.00"), respecting the block height of 25 cm (9.84")
Remark	Wallcovering crafted from 100% caprine leather. Subtle imperfections, irregularities and colour variations may occur. Small deviations in the dimensions of the hand-stitched leather are inherent to the artisanal production process. As a result, a perfectly precise match during installation cannot always be guaranteed.
Adhesive	Arte Clearpro or a good quality dispersion adhesive
How to paste	Paste the wall
Light resistance	Moderate lightfastness
How to remove	Strippable
Fire rating EU	D-s1, d0
Fire rating US	Class A
Maintenance	Nonwashable



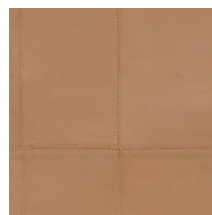
Colourways (8)



27450



27451



27452



27453



27454



27455



27456



27457

More info? [Click here](#)

Order samples, calculate quantities, view instructional videos, download technical information and more:
www.arte-international.com



ARTE®

wallcoverings for the ultimate in refinement