

# ETAMINE

Collection Allures

---



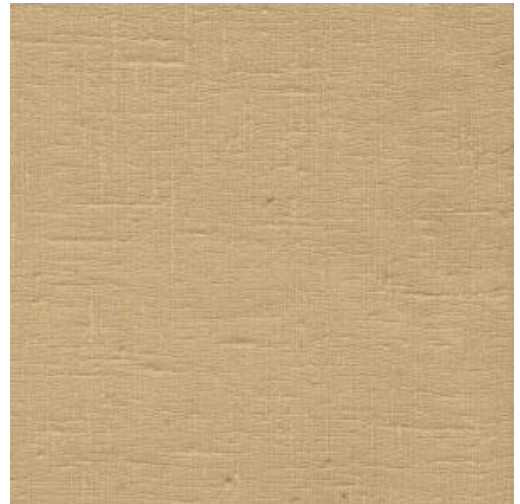
## Story behind the collection

The Allures collection pays homage to the French 'savoir vivre' of the nineteenth century. Classical motifs are reimagined with a contemporary touch, where refinement and craftsmanship merge through rich materials, meticulous handwork, and exquisite finishing.

---

## Technical specifications

Reference	<a href="#">29254</a> • Biscuit
Product category	Couture
Composition	Textile wallcovering on non-woven backing
Description	An authentic textile with an open, airy weave that creates a rustic, natural appearance.
Dimensions	Width 115 cm (45.28") / sold by the linear metre/yard
Pattern repeat	Free match 0 cm (0.00")
Adhesive	Arte Clearpro or a good quality dispersion adhesive
How to paste	Paste the wall
Light resistance	Good lightfastness
How to remove	Strippable
Fire rating EU	B-s1, d0
Fire rating US	Class A
Maintenance	Spongeable during hanging (dab away damp glue)



## Colourways (10)



29250



29251



29252



29253



29254



29255



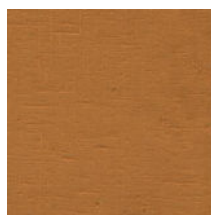
29256



29257



29258



29259

More info? [Click here](#)

Order samples, calculate quantities, view instructional videos, download technical information and more:  
[www.arte-international.com](http://www.arte-international.com)



ARTE®

wallcoverings for the ultimate in refinement