

# TINTURA

Collection Antigua

---



## Story behind the collection

The Antigua collection draws its inspiration from traditional crafts that are still valued in our modern society, now more than ever. Classic handicrafts such as sewing, painting and drawing all require professional knowledge that we still greatly appreciate today.

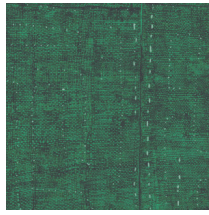
---

## Technical specifications

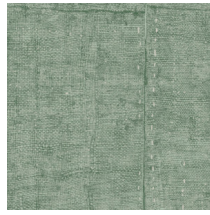
Reference	<u>33026</u> • Rosewood
Product category	Refined
Composition	Vinyl wallpaper on paper backing
Description	Semi-plain wallpaper with the pure look and texture of woven linen
Dimensions	Rolls of 10.05 m x 1.00 m = 10 m <sup>2</sup> (11 yds x 39.37" = 108 sq. ft.)
Pattern repeat	Drop match 90/45 cm (35.43"/17.72")
Adhesive	Arte Clearpro or a good quality dispersion adhesive
How to paste	Method 1: paste the wall and moisten the wallcovering. Method 2: paste the wallcovering.
Light resistance	Good lightfastness
How to remove	Peelable
Fire rating EU	B-s2, d0
Fire rating US	Class A
Maintenance	Extra-washable



## Colourways (14)



33020



33021



33022



33023



33024



33025



33026



33027



33028



33029



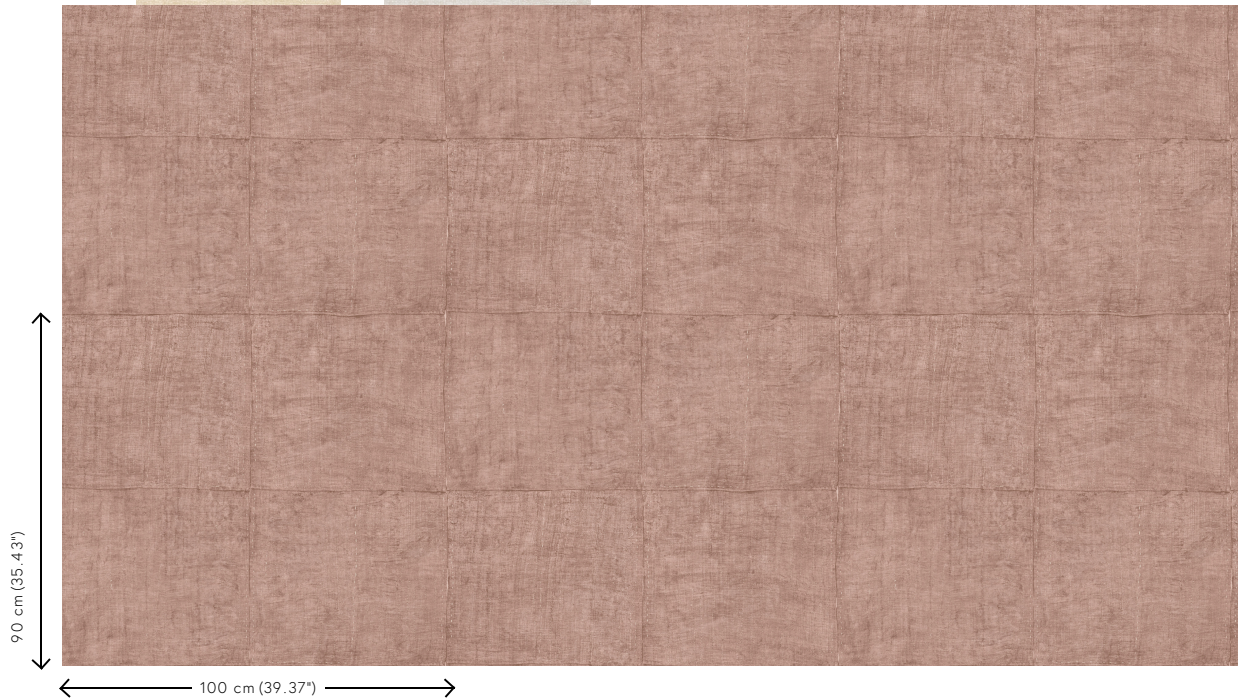
33030



33031



## View



More info? [Click here](#)

Order samples, calculate quantities, view instructional videos, download technical information and more:  
[www.arte-international.com](http://www.arte-international.com)



ARTE®

wallcoverings for the ultimate in refinement