

# HORUS


Collection Essentials Luxor



## Story behind the collection

Even after a hundred years, the fabulous Roaring Twenties continue to capture the imagination. This was the era when the lavish Art Deco style emerged, inspired by the sparkling optimism and remarkable events of the time. The discovery of Tutankhamun's tomb in Egypt's Valley of the Kings, with its wealth of finely decorated furniture and objects, played a defining role in shaping the period's aesthetic.

## Technical specifications

Reference	19431 • Greige
Product category	Refined
Composition	Wallpaper on non-woven backing
Description	A graceful, geometric pattern with evident Art Deco influences
Dimensions	Rolls of 10 m x 0.70 m = 7 m <sup>2</sup> (11 yds x 27.56" = 76 sq. ft.)
Pattern repeat	Straight match 16 cm (6.30")
Adhesive	Arte Clearpro or a good quality dispersion adhesive
How to paste	Paste the wall
Light resistance	Good lightfastness
How to remove	Strippable
Fire rating EU	B-s1, d0
Fire rating US	Class A
Maintenance	Washable
IMO Certified	



## Colourways (7)



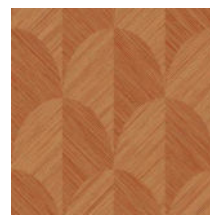
19430



19431



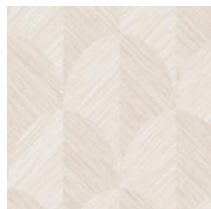
19432



19433



19434

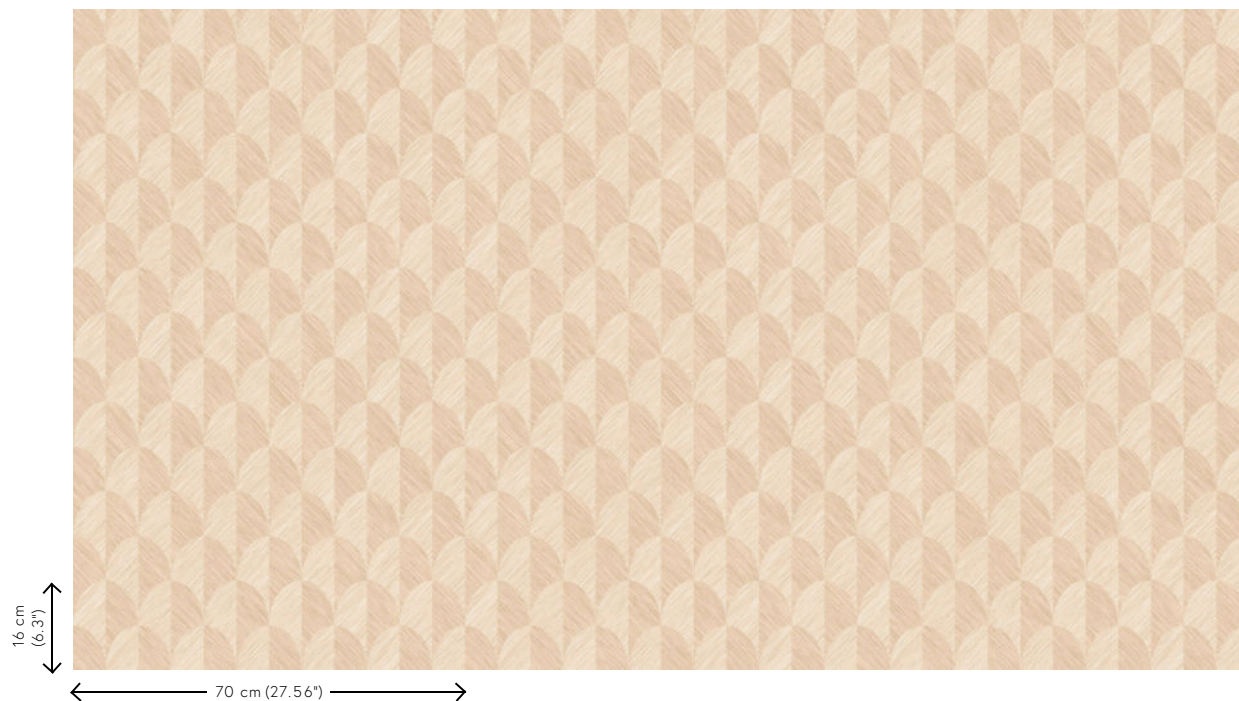


19435



19436

## View



More info? [Click here](#)

Order samples, calculate quantities, view instructional videos, download technical information and more:  
[www.arte-international.com](http://www.arte-international.com)



ARTE®

wallcoverings for the ultimate in refinement